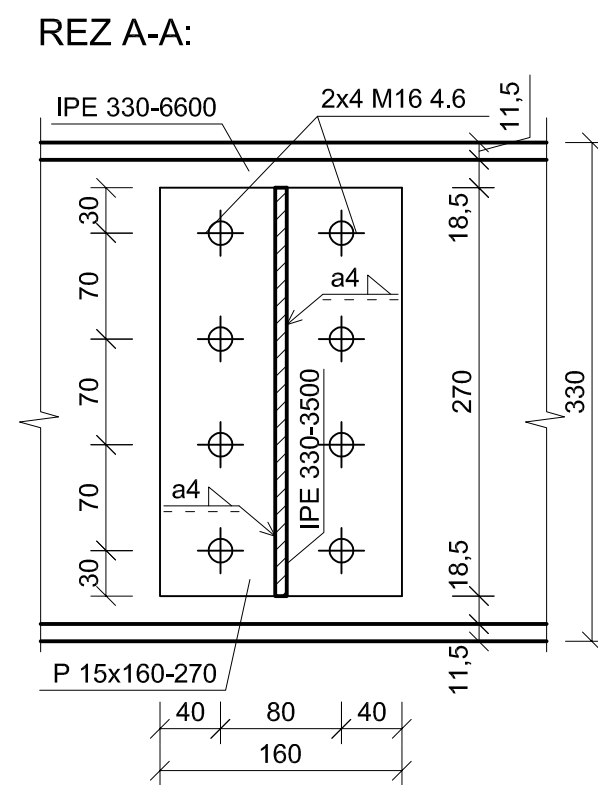
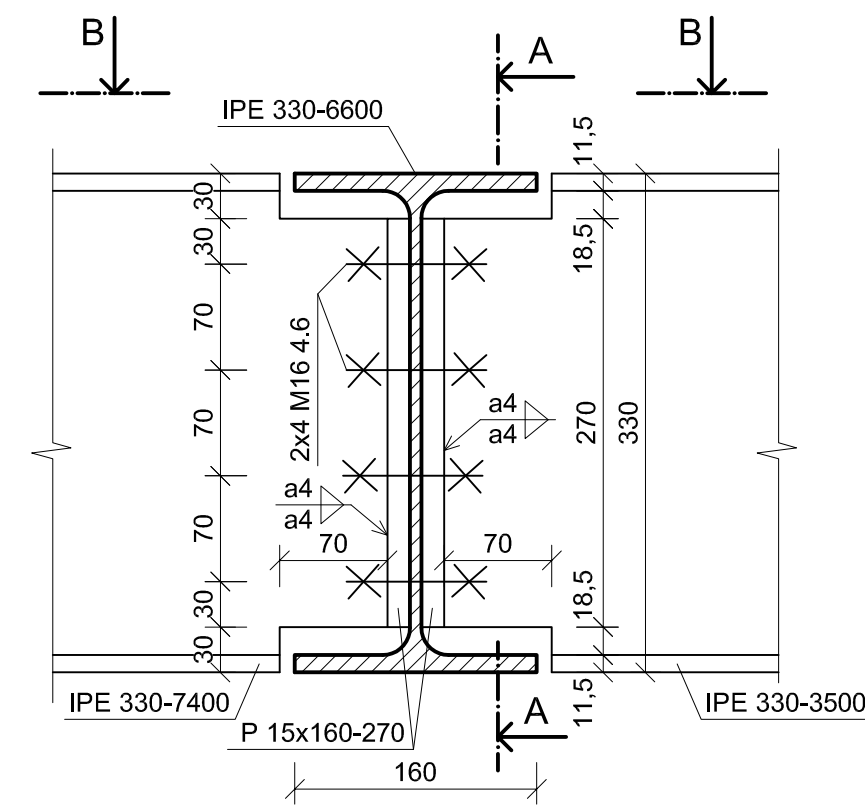
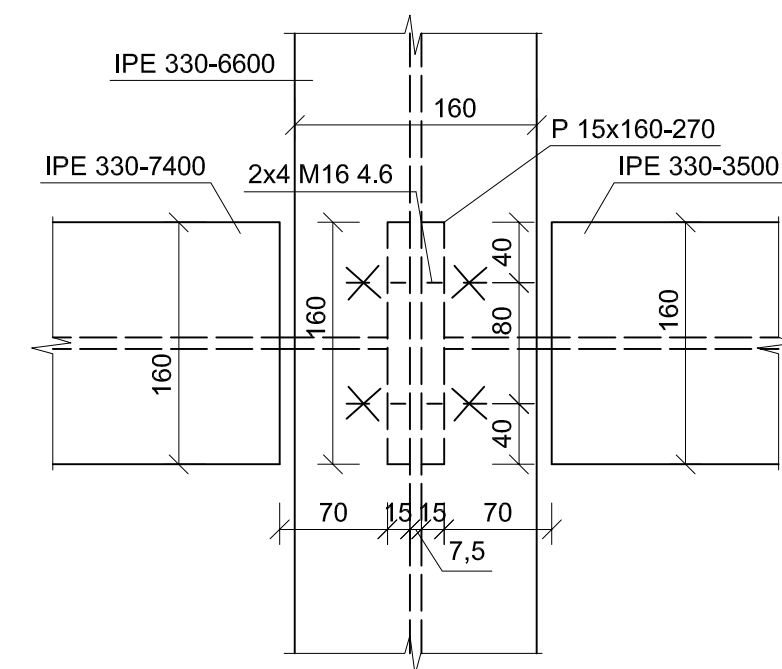


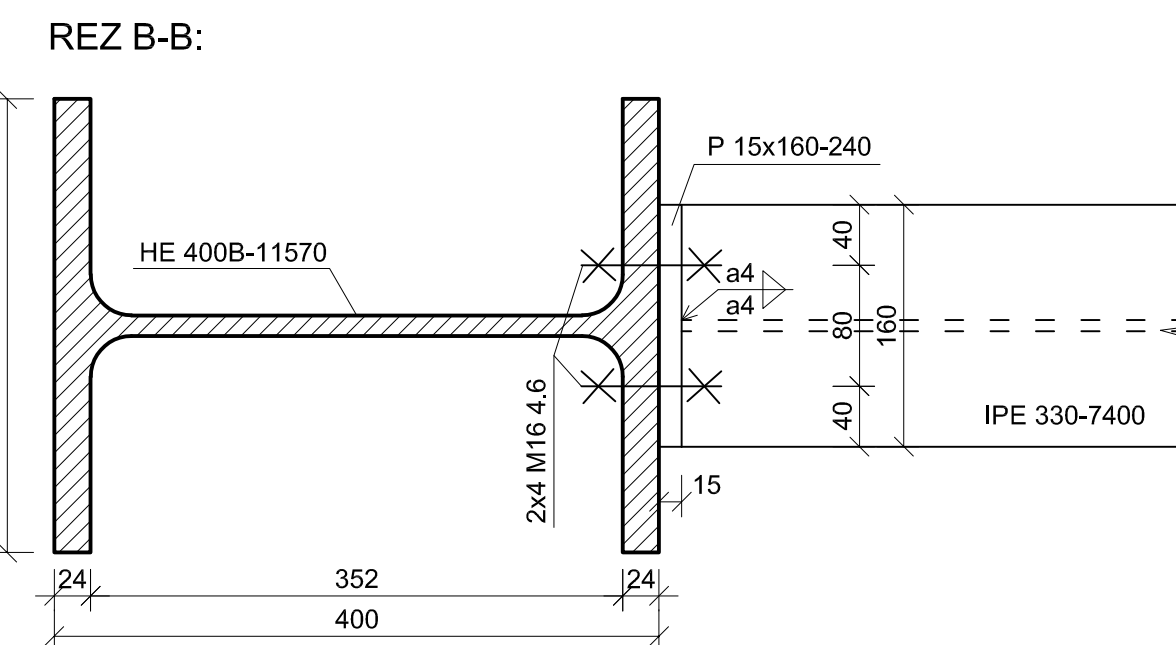
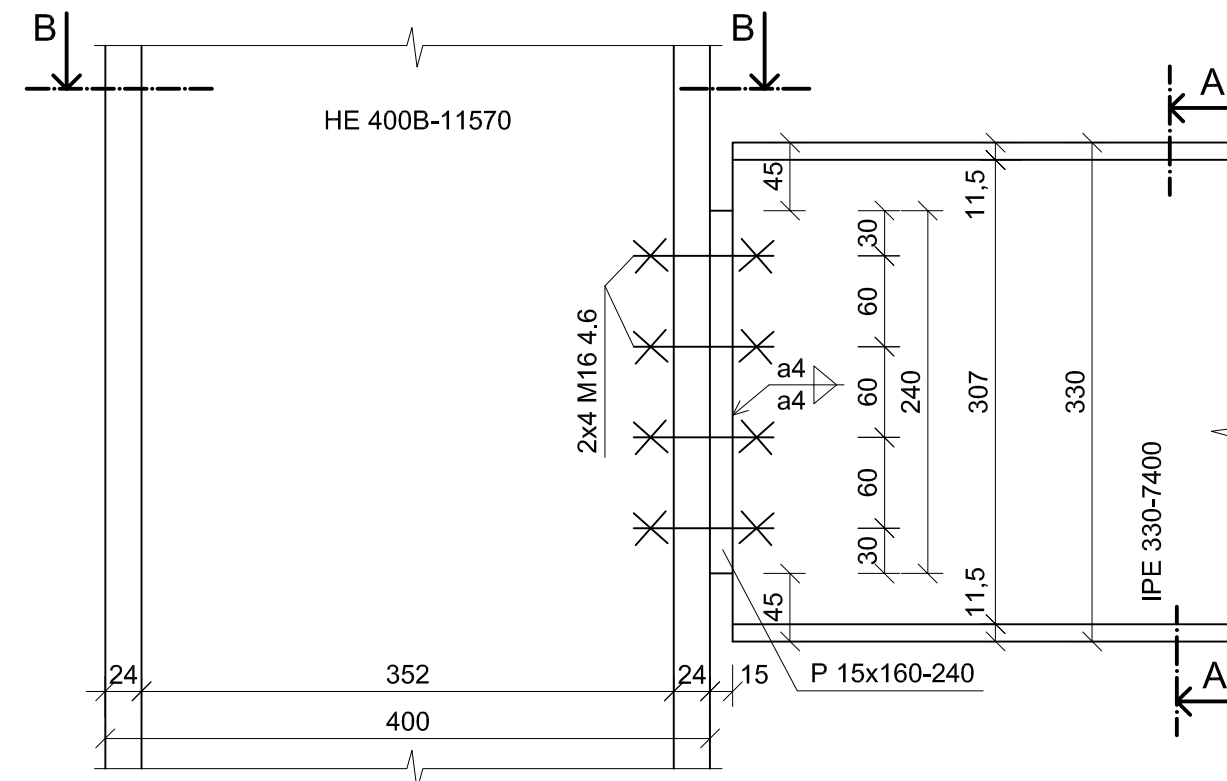
DETAIL D1 - NAPOJENIE STROPNÉHO TRÁMU NA PRIEVLAK



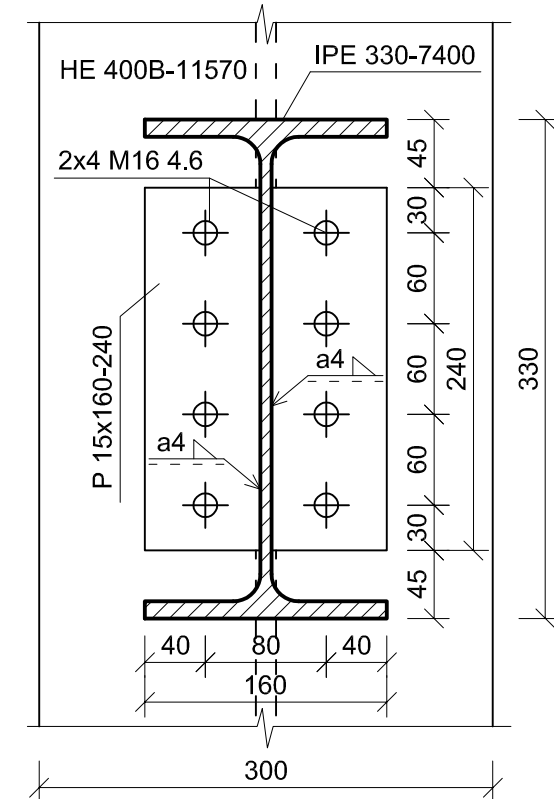
POHLAD B-B:



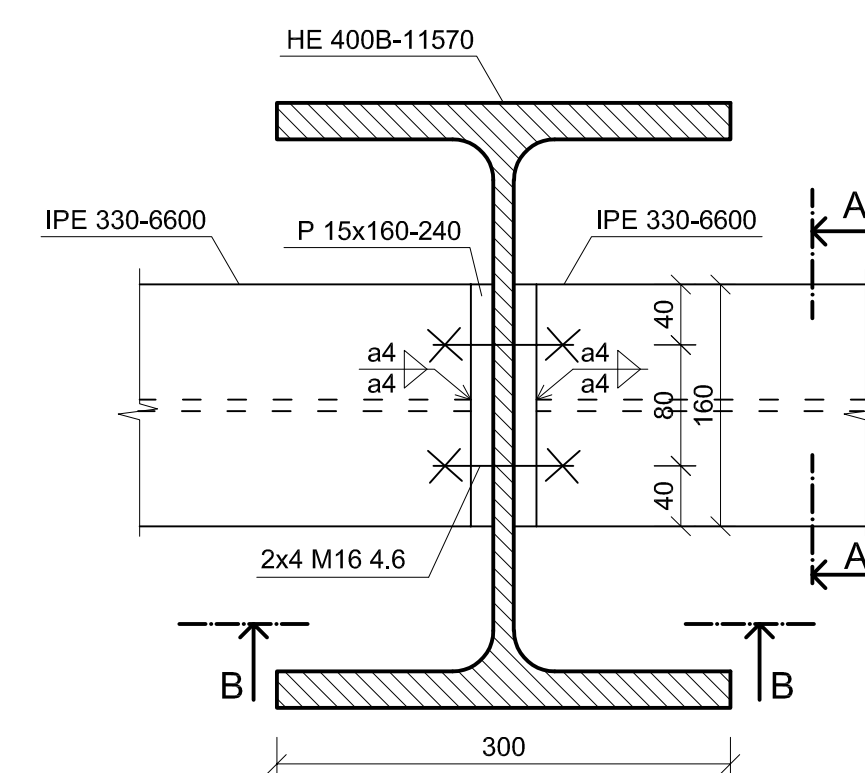
DETAIL D2 - NAPOJENIE STROPNÉHO TRÁMU NA STĽP



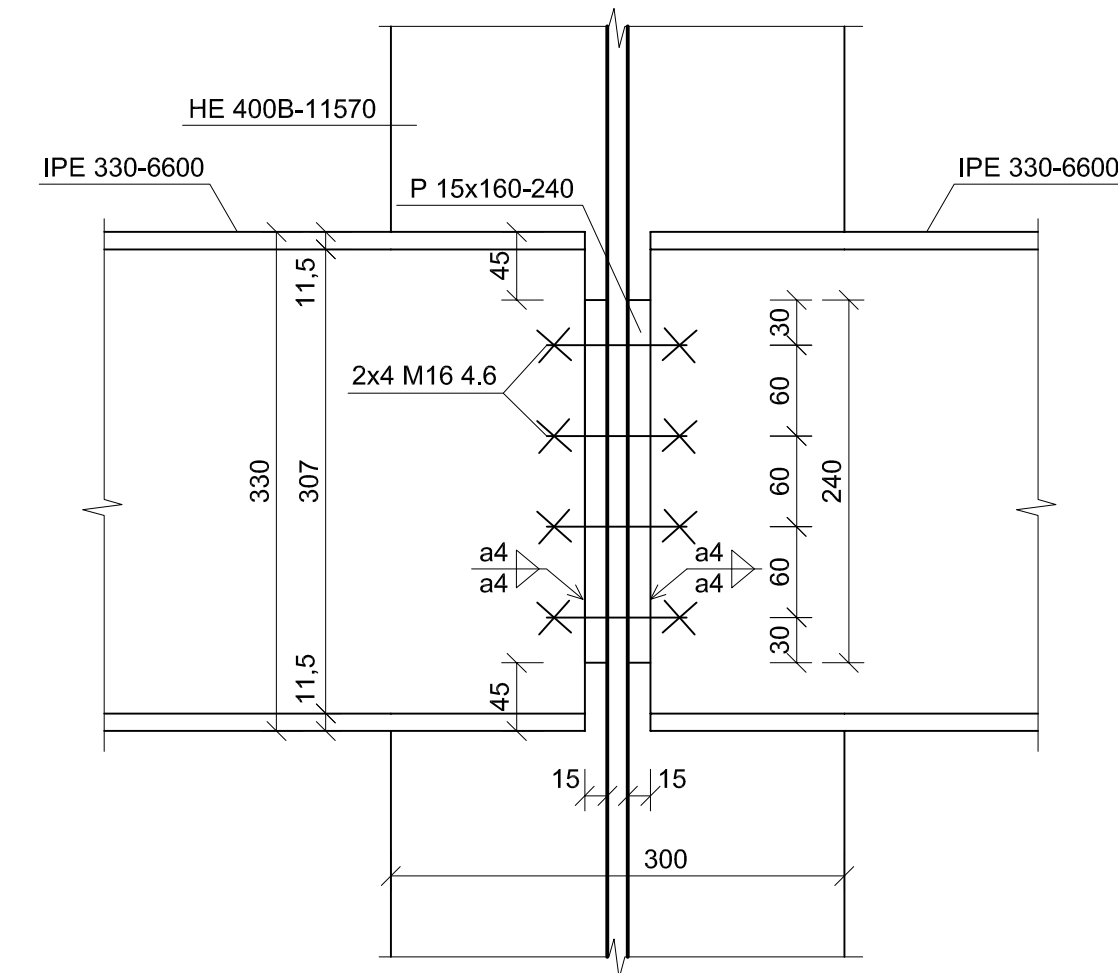
REZ A-A:



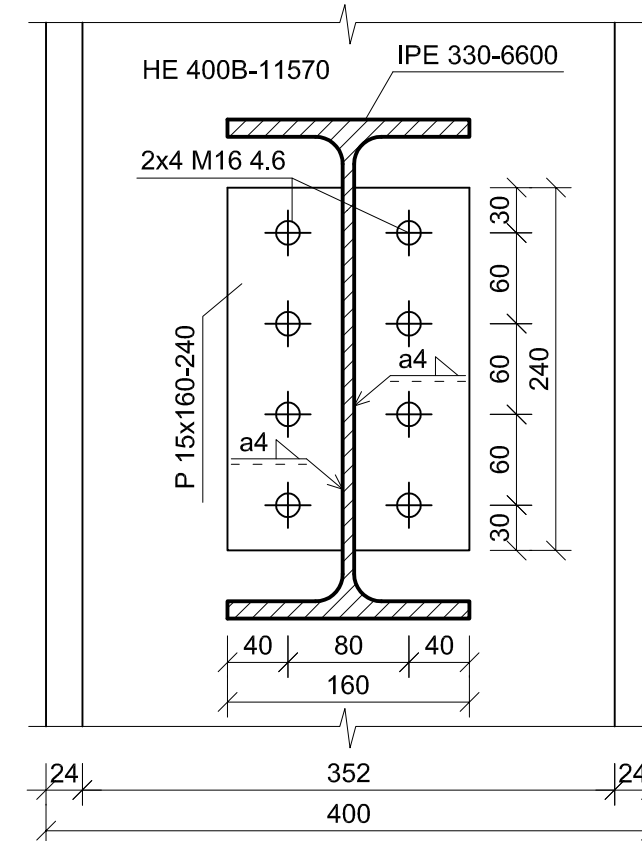
DETAIL D3 - NAPOJENIE PRIEVLAKU NA STĽP



REZ B-B:



REZ A-A:



VYPRACOVALA:	KONTROLOVAL:	Žilinská univerzita v Žiline Stavebná fakulta KSKM	
Ivana Janušová	Ing. Jozef Gocál, PhD.	KRÚŽOK:	4ZC144
DETAILY SPOJOV KONŠTRUKČNÝCH PRVKOV		DÁTUM ODOVZDANIA:	20.12.2017
		FORMÁT:	4xA4
KOVOVÉ KONŠTRUKCIE II.		MIERKA:	1:5